



## Danalock app guides



Visit our website for more information about  
Danalock products and product guides

[www.danalock.com](http://www.danalock.com)

## The Danalock app

The Danalock app is used as main control for all Danalock products\*.  
Go to App Store or Google Play to download the app.

App Store



<https://itunes.apple.com/dk/app/danalock/id768685462>

Google Play



<https://play.google.com/store/apps/details?id=dk.polycontrol.ekey>

## Danalock V3 – Basic app guide

Create a user

The keychain

Add a Danalock V3 to your keychain

Calibrate your lock

*Automatic calibration*

*Manual calibration*

Invite a guest

*Select access level*

*Set guest settings*

*Send invitation*

Manage guests

*Guest information*

*Change guest access*

*Remove guest*

User and lock information

*My Profile*

*Guest profiles*

*Lock information*

Firmware upgrade

Delete

Reset settings

5

6

7

8

9

10

11

12

13

14

15

16

16

17

18

19

19

19

20

21

22

23

## Danalock V3 – app feature guide

Auto Unlock

*Setting up Auto Unlock*

Auto lock

*Setting up Auto Lock*

Twist Assist

*Setting up Twist Assist*

End to End Operation

*Do I need End to End Operation?*

*Setting up End to End Operation*

Hold Back Latch

*Setting up Hold Back Latch*

Smart Home

*Zigbee / Z-Wave*

Log

## Universal Module V3 – app guide

Universal Module V3

Add new device

Settings

Firmware update

Rename

24

25

26

28

28

29

29

30

31

31

32

32

33

33

34

35

36

37

38

39

40

Auto Unlock	41	Vacation mode	62
Relays	42	Delete	63
<i>Pulse duration</i>	43		
<i>Start delay</i>	44	<b>My accessory devices – Danabridge V3</b>	<b>64</b>
<i>Time unit</i>	45	My accessory devices	65
<i>Test setup</i>	46	Danabridge V3	66
Smart Home	47	Add to the Danalock app	67
Log	48	Settings	68
Invite a guest	49	<i>Connect to Wi-Fi</i>	69
Delete	50	<i>Firmware update</i>	70
Reset settings	51	<i>Rename</i>	71
		<i>Pair device</i>	72
<b>My accessory devices – Danapad V3</b>	<b>52</b>	<i>Keychain visibility and operation</i>	73
My accessory devices	53	LED signals	74
Danapad V3	54	Delete	75
Add to the Danalock app	55	Reset settings	76
Settings	56		
<i>Firmware update</i>	57		
<i>Pair device</i>	58		
<i>Create a pin code</i>	59		
<i>Rename</i>	60		
<i>Easy lock</i>	61		





17/01/2020

# Danalock V3

## – Basic app guide

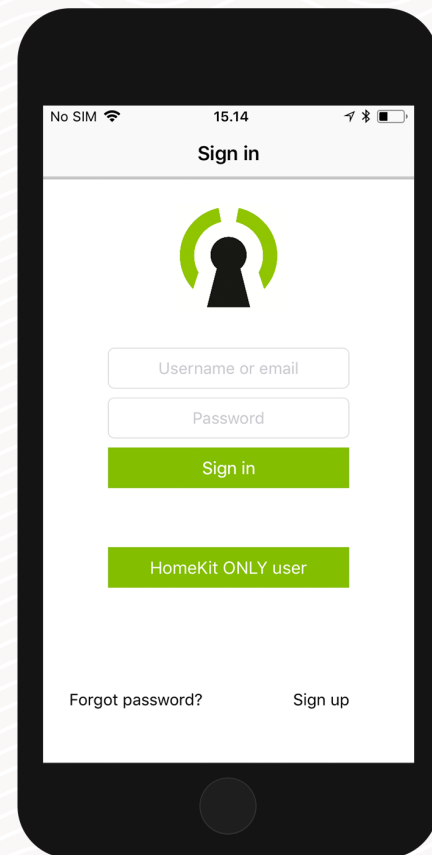


Visit our website for more information about  
Danalock products and product guides

[www.danalock.com](http://www.danalock.com)

## Create a user

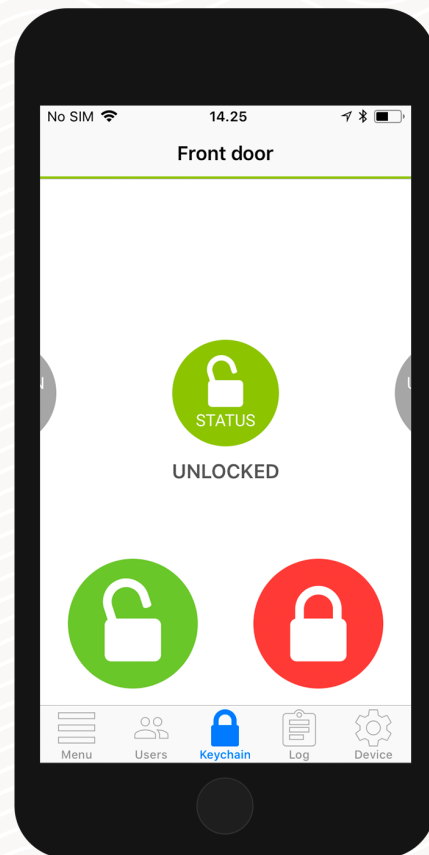
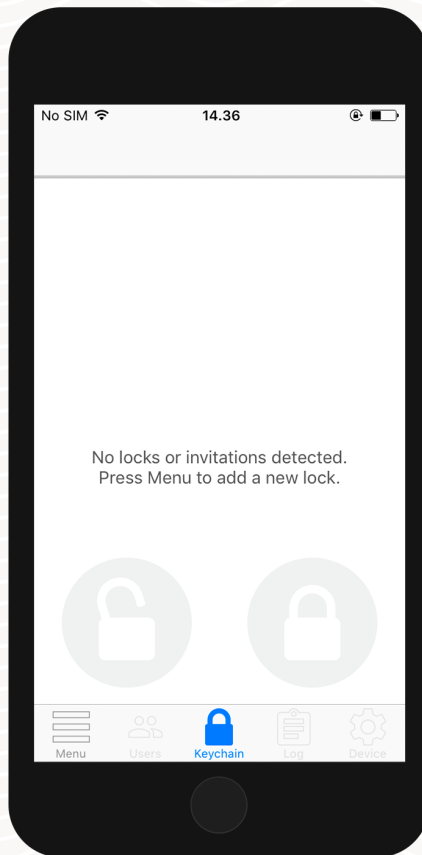
When you open the app for the first time, you will be asked to either log in or sign up.



## The keychain

The keychain is where you find the locks you have access to. If you have more than one device added to your account you'll be able to select by swiping left and right. Use the lock buttons to lock (red button) or unlock (green button) the device.







To start using the Danalock App you need to add at least one Danalock device to your keychain.



## Add a Danalock V3 to your keychain

To add a Danalock V3 to your keychain press ADD NEW DEVICE. Your phone now scans the area for available devices and presents a list for you to choose from. The icons indicate the type of device found:

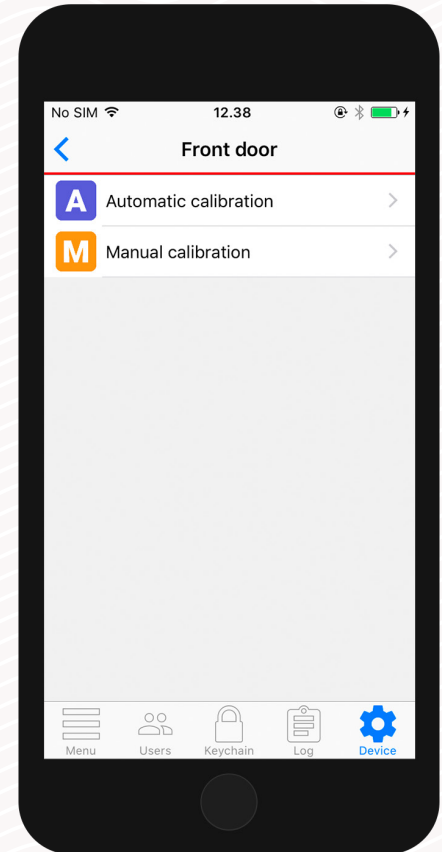
Press the device you want to install. The app will connect and add the Danalock device to your keychain.

	Danalock V3
	Universal Module V3
	Universal Module V2
	Danabridge V3
	Danapad V3
	Danalock V2
	Danalock V1

## Calibrate your lock

If the device you have added is a Danalock V3, you need to calibrate it. You can calibrate it either manually or automatically. Navigate to the keychain and make sure that the lock you want to calibrate is selected in the keychain.

Press DEVICE and select CALIBRATION in the settings list. Choose between MANUAL CALIBRATION and AUTOMATIC CALIBRATION. Manual calibration will give you a more nuanced control over the distance your Danalock V3 travels between locked and unlocked position.

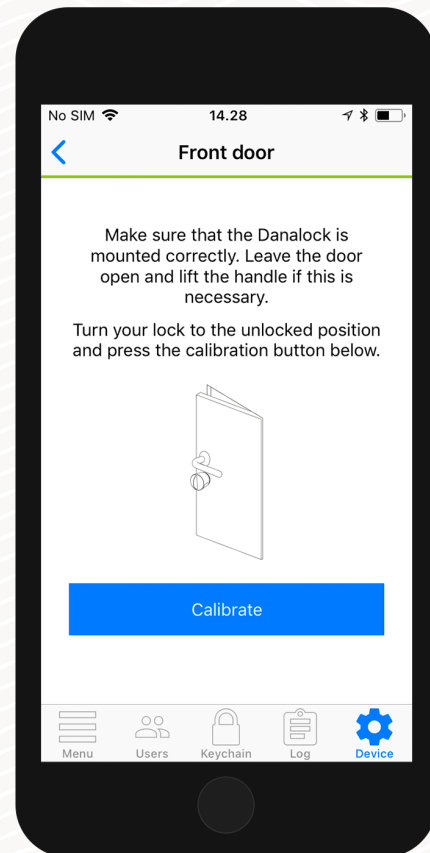


*Calibrate your lock*

## Automatic calibration

Make sure that the Danalock V3 is mounted correctly. Leave the door open and lift the handle if necessary. Turn your Danalock V3 to unlocked position and press the calibration button. The Danalock V3 will light up white while calibrating.

When the calibration has been completed your lock is ready to use. In the settings tab you can see a list of configurations of other features for your Danalock V3.

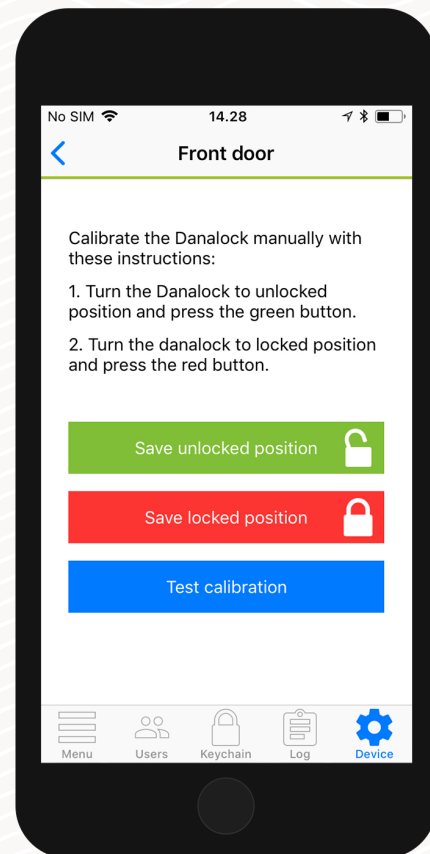


*Calibrate your lock*

## Manual calibration

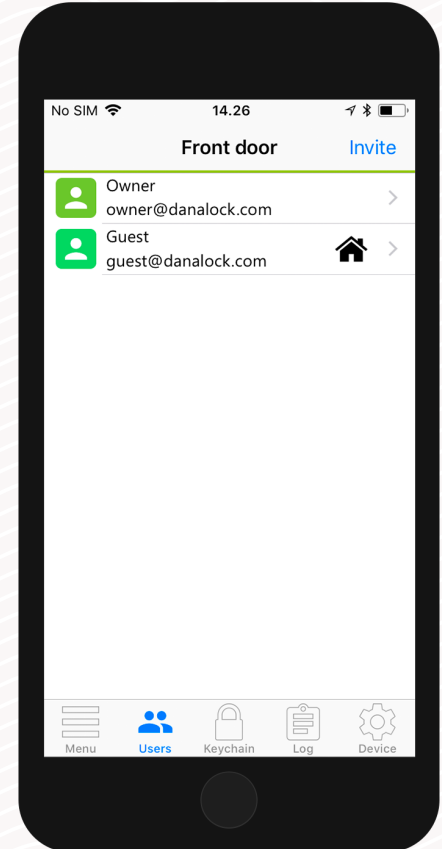
Turn the Danalock V3 to unlocked position and press the green button. Then turn the Danalock V3 to locked position and press the red button. You can press the blue button to test your calibration.

When the calibration has been completed your lock is ready to use. In the settings tab you can see a list of configurations of other features for your Danalock V3.



## Invite a guest

If you have more than one Danalock V3 in the keychain navigate to the Danalock V3 you want to invite to, and press USERS. Press INVITE in the upper right corner to go to the invitation screen.





*Invite a guest*

## Select access level

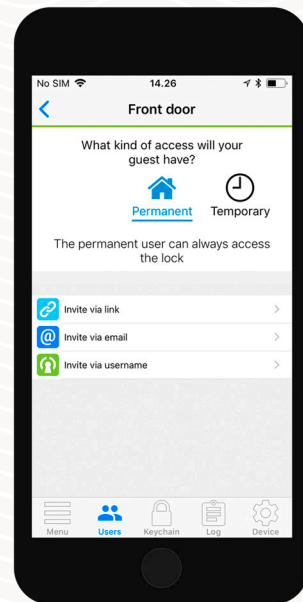
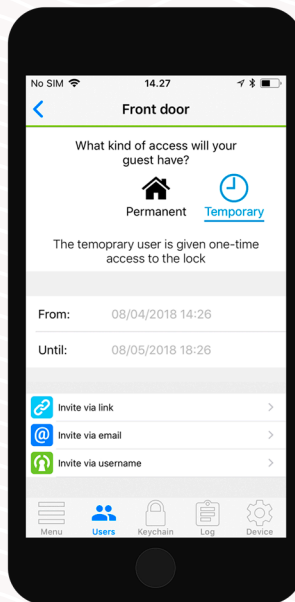
Select the type of access you want your guest to have:

### Temporary guests:

Temporary guests are given access in a single time interval. With this access type, you define the interval in which you want your guest to have access.

### Permanent guests:

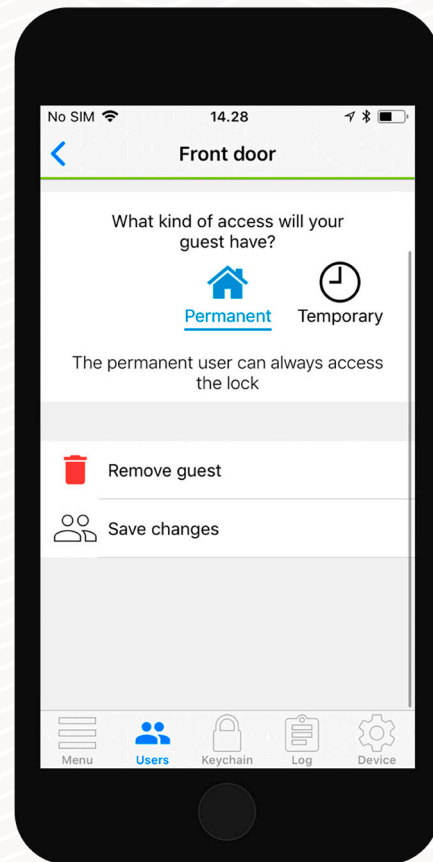
Permanent guests have access at all times, but can't invite new guests themselves.



*Invite a guest*

## Set guest settings

Below the access level and time restrictions, you can turn on usage notifications if you want to be notified when the user operates the lock.



*Invite a guest*

## Send invitation

You can invite your guests in three different ways:

### **Invite by sharing a link**

This will generate a hyperlink that you can share with the guest. Note that the link can only be activated once and can thus only be used to invite one guest.

### **Invite by email**

Enter the email of the guest you want to invite. The Danalock App will take you directly to your preferred mail application and generate the invitation. Send the mail to invite your guest.

### **Invite by Danalock username**

Enter the username of the guest you want to invite. Your guest will receive the invitation directly in the Danalock App.

## Manage guests

You can easily monitor and manage the guests for your Danalock devices. Navigate to the Danalock device you want to manage in the keychain and press USERS in the bottom navigation bar. Here you can see the guest list for your Danalock device along with additional details about each guest.

### Guest information

On the list you can see each of your guests along with a set of icons. Each icon gives information about what kind of access the guest has.



The loudspeaker icon indicates that you will receive a notification when this guest operates the Danalock.



The bridge icon indicates that the guest can control the Danalock remotely via the Danabridge.

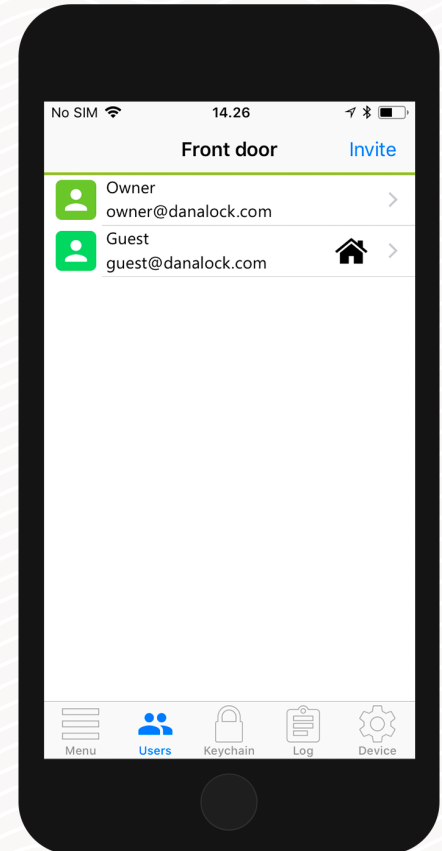


The house means permanent access, the clock means temporary access

*Manage guests*

## Change guest access

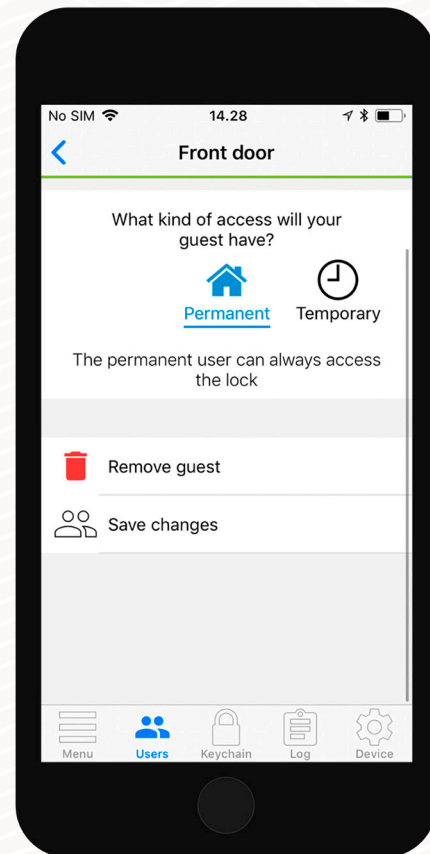
To change the access settings for one of your guests, tap the guest on the list, make the desired changes and press SAVE.



*Manage guests*

## Remove guest

To remove one of your guests from your guest list, tap the guest on the list, make the desired changes and press save.



## User and lock information

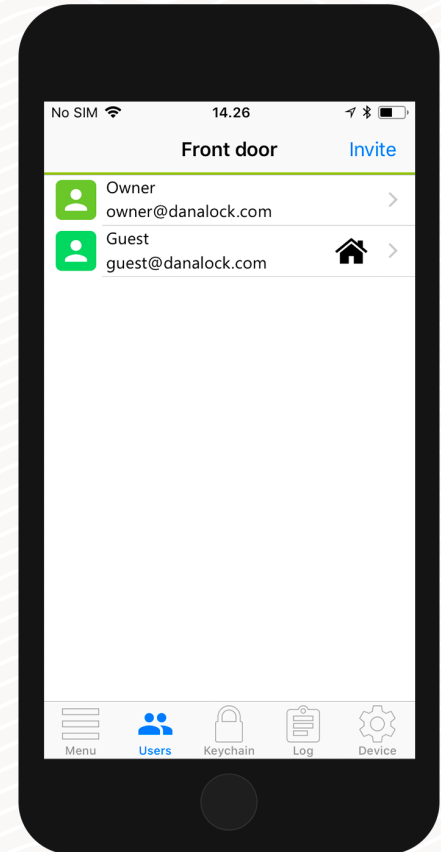
You can see a list of your guests' email addresses as well as their chosen displayed names by pressing USERS in the bottom navigation bar.

## My Profile

You can edit your own information by selecting MENU and pressing PROFILE. You can edit your displayed name, email address, and your password.

## Guest profiles

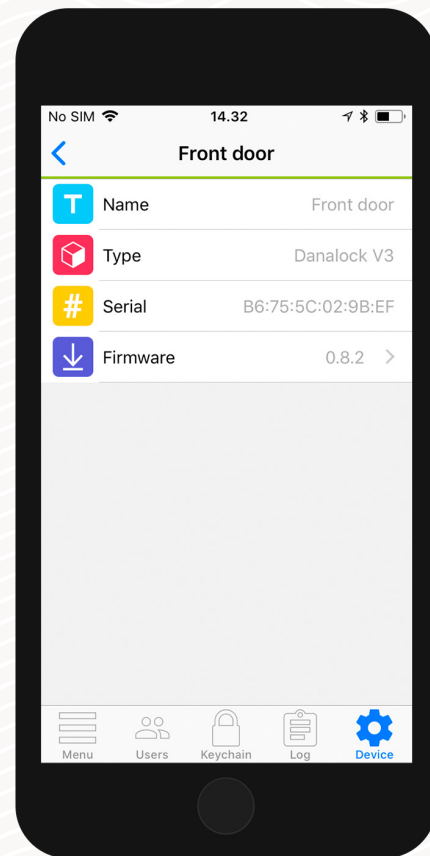
You can see a list of your guests' email addresses as well as their chosen displayed names. Navigate to the Danalock device you want to manage in the keychain and press USERS.



### User and lock information

## Lock information

Navigate to the Danalock device you want information about in the keychain and press DEVICE. Here you can change the Lock name and see battery status. Press DEVICE INFO to see specific information such as MAC address and product type.



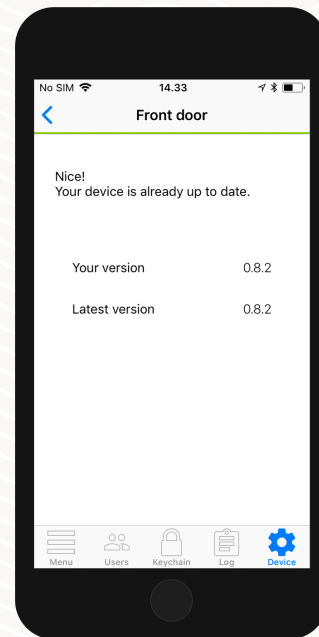
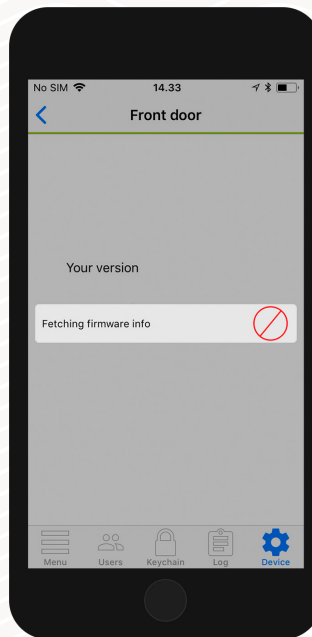
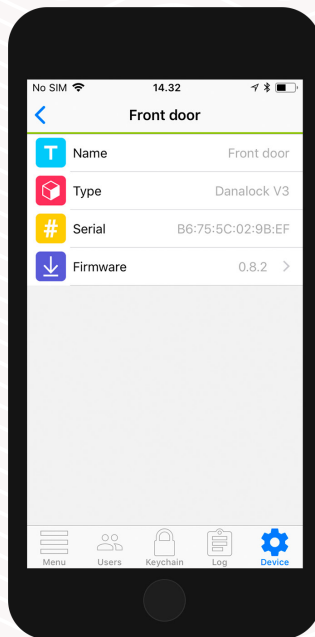


## Firmware upgrade

Navigate to the Danalock device you want to update in the keychain. Go to device settings, press LOCK INFO > FIRMWARE. The Danalock App checks installed firmware and updates it if there is a newer one available.

It is important you keep your phone near the Danalock V3 at all times during the firmware update.

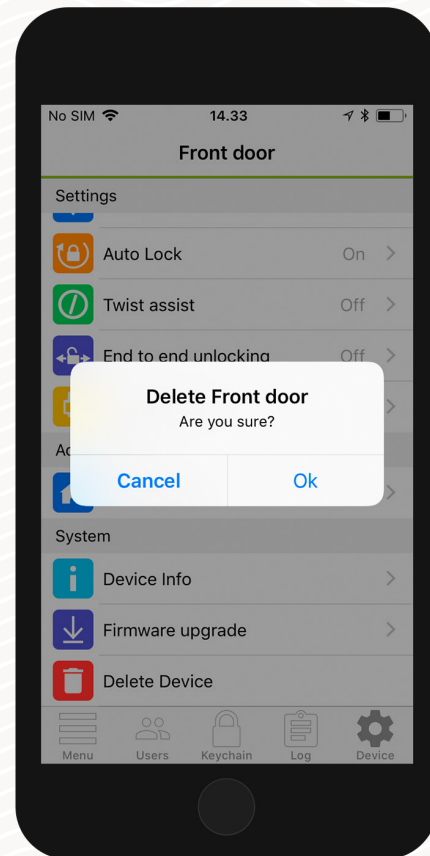
**Before updating** the firmware make sure the phone is at a sufficient power level.



## Delete

Navigate to the Danalock device you want to remove in the keychain. In the SETTINGS list of your Danalock V3 press DELETE DEVICE. The Danalock App will remove the lock from your account.

To delete an accessory device from your account start by unpairing it from your Danalock device. In the accessory device settings list press PAIRING > UNPAIR DEVICE. When the accessory device has been unpaired press DELETE in the SETTINGS list.



## Reset settings

To reset the Danalock V3 settings you insert a small pin or paper clip into the hole on the side of the Danalock V3 and press ten times. When the reset request is confirmed the LED will blink red.





17/01/2020

# Danalock V3

## – app feature guide



Visit our website for more information about  
Danalock products and product guides

[www.danalock.com](http://www.danalock.com)

## Auto Unlock

With the *Auto Unlock* feature the Danalock V3 will detect your arrival and unlock the door when you get home.

The Auto Unlock feature uses GPS geofence to sense when you are getting home. When you enter the *Auto Unlock zone* (300-1000 m depending on setup), the Danalock app will start looking for your Universal Module V3 and unlock it when you get within Bluetooth® range. The app will not unlock again before you exit and re-enter the zone.

Feature setup vary between iOS and Android devices.

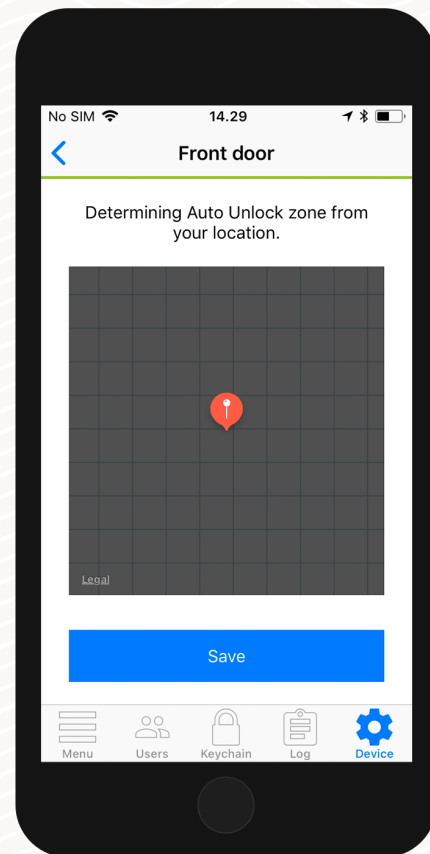
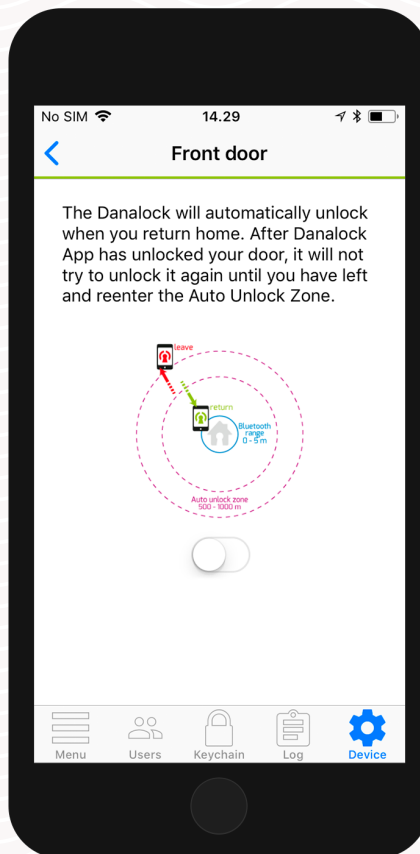
Read more on [Danalock.com](https://danalock.com) > FAQ

Circumstances beyond Danalock's influence such as phone model and OS setup, GPS, BLE, and environment can affect the functionality and behavior of the *Auto Unlock* feature and cause it to fail. It is recommended that *Auto Unlock* is disabled while you are inside the Auto Unlock zone and enabled when you leave.

## Auto Unlock

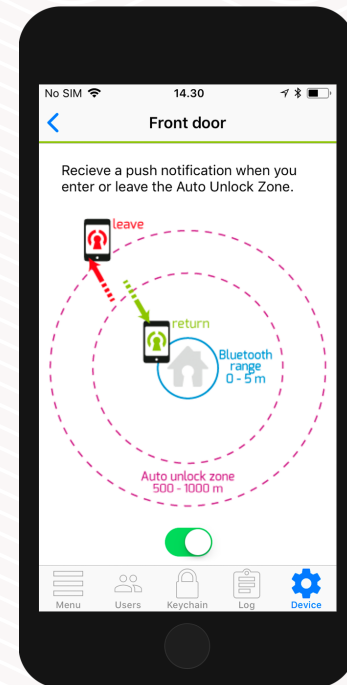
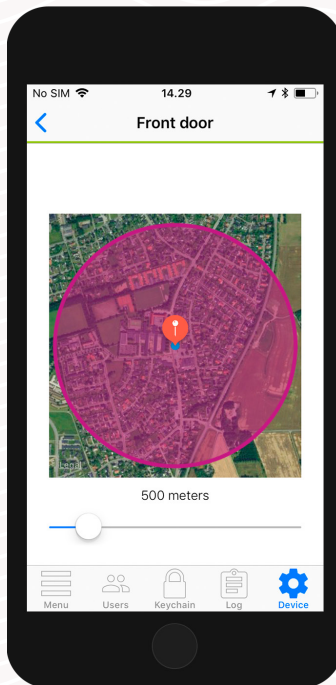
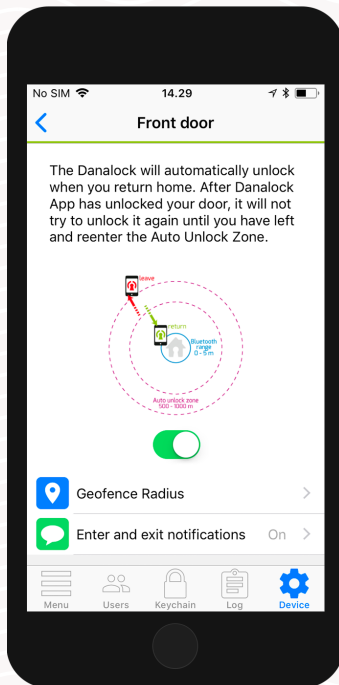
### Setting up Auto Unlock

Make sure that you are near your Danalock V3 and have location services turned on. Navigate to the lock you want to set up in your keychain and press SETTINGS. In the settings menu, press AUTO UNLOCK and turn the slider on. The app now determines your home location and shows you the geofence on a map. Press SAVE to accept your *Auto Unlock Zone*.



## Auto Unlock

In the *Auto Unlock* settings view you can configure *Auto Unlock* further to fit your needs. You can redefine the geofence radius and setup enter and exit notifications.

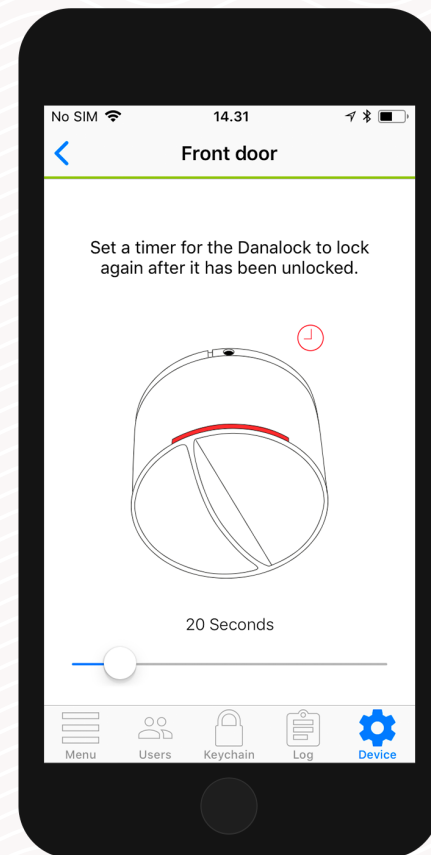


## Auto lock

With the *Auto Lock* feature the Danalock V3 will automatically lock the door for you a set time after it has been unlocked. You can specify the duration the Danalock V3 should wait before locking the door.

## Setting up Auto Lock

Make sure that you are near your Danalock V3. In the keychain of the app navigate to the Danalock V3 and press SETTINGS. In the settings menu, press AUTO LOCK and turn the slider on. The app will show a slider that lets you control the delay before the Danalock V3 locks automatically.



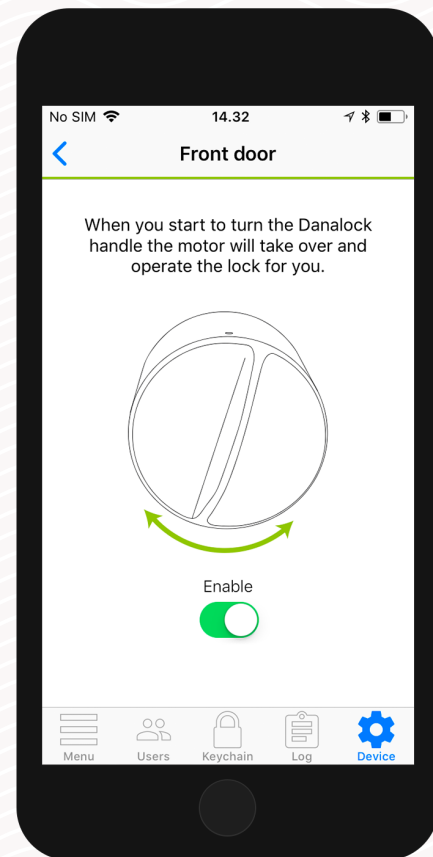


## Twist Assist

*Twist Assist* helps you rotate the thumb turn on the lock. When you start turning, the Danalock V3 will take over and operate the lock for you.

## Setting up Twist Assist

Make sure you are near your Danalock V3 when setting up *Twist Assist*. In the app keychain navigate to the Danalock V3 and press SETTINGS. In the settings menu, press  $\frac{1}{2}$  and turn the slider on.



## End to End Operation

The *End to End Operation* mode is made to support a certain type of lock where the outside part and inside part of the cylinder are not connected. This means that turning the key won't rotate the Danalock V3, which makes it unable to know if the door is locked or unlocked.

When in this mode, the Danalock V3 operates the lock cylinder by turning in one direction until it reaches the end. This also means that the Danalock V3 is unable to display your current lock state in this mode.

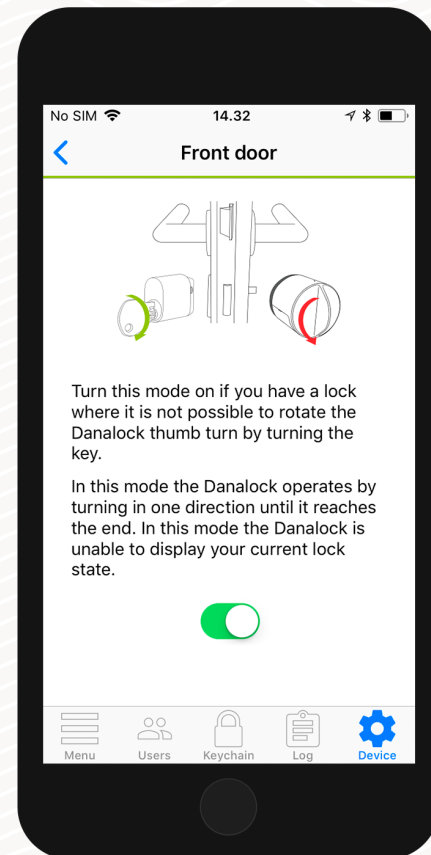
### *End to End Operation*

## Do I need End to End Operation?

Open the door, insert the key and turn it. If the thumb turns on the inside of the door doesn't rotate along with the key, you need to enable *End to End Operation*.

## Setting up End to End Operation

Make sure that you are near your Danalock V3 and that it has been calibrated. In the keychain of the app navigate to the Danalock V3 and press SETTINGS. In the settings menu, press END TO END OPERATION and turn the slider on.

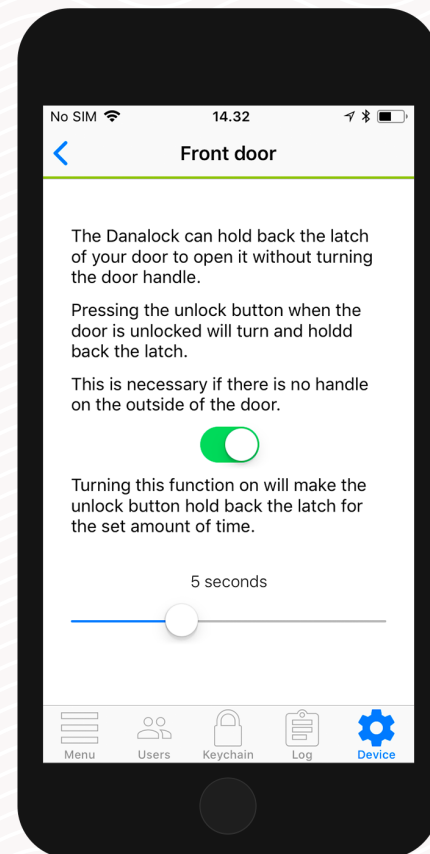


## Hold Back Latch

With this feature, the Danalock V3 can open doors without an external door handle. The Danalock V3 will hold back the latch after unlocking the door to allow entrance without turning a door handle.

## Setting up Hold Back Latch

Make sure that you are near your Danalock V3. In the keychain of the app navigate to the Danalock V3 and press SETTINGS. In the settings menu, press HOLD BACK LATCH and turn the slider on. The app will show a slider that lets you control the delay before the Danalock V3 releases the latch.



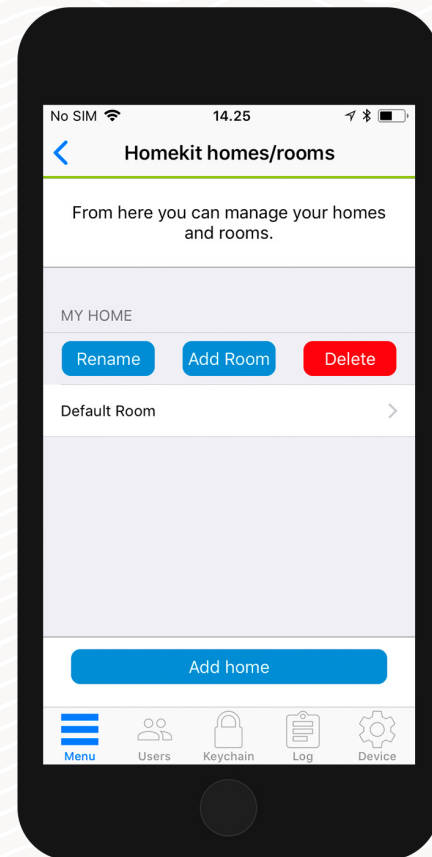
## Smart Home

In the *Smart Home* section you will see a list of smart home integrations your Danalock V3 can be paired with.

## Zigbee / Z-Wave

If you have a Danalock V3 in either Zigbee or Z-Wave versions you will need to connect it to your smart home gateway before it is ready to use. You can connect your Danalock V3 to your gateway either with click commands or with the app.

In the settings menu of your Danalock V3, press SMART HOME and select Zigbee/Z-Wave. Press START to set your Danalock V3 in inclusion mode. When your Danalock V3 starts blinking green it is in inclusion mode and you have 30 seconds to pair it with a gateway.



## Log

In the *Log* you can monitor the usage of your Danalock V3.

You can see a detailed list of who has accessed your lock. The icon on the left indicates what kind of activity was performed, date and time.



Unlocked via app



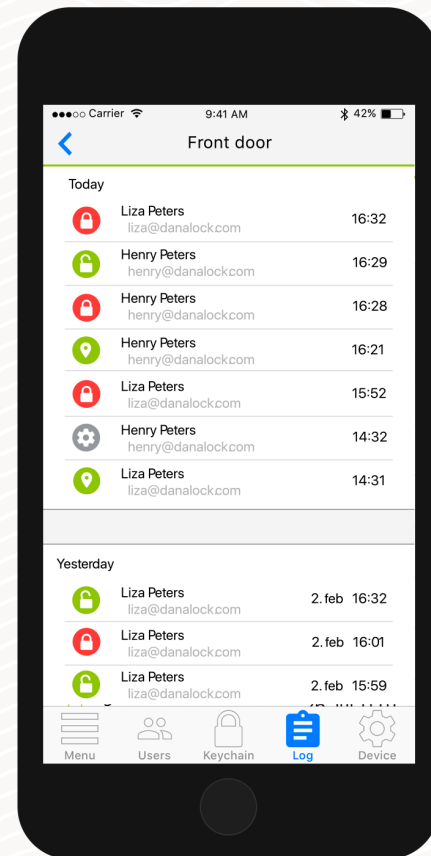
Locked via app



Settings changed



Unlocked via *Auto Unlock*



# Universal Module V3 – app guide



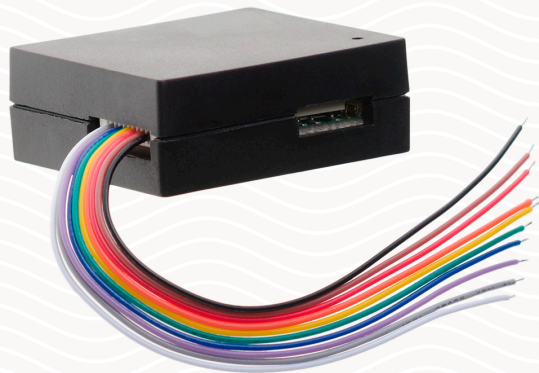
Visit our website for more information about  
Danalock products and product guides

[www.danalock.com](http://www.danalock.com)

## Universal Module V3

The Danalock Universal Module V3 is the perfect solution for operating electronic devices such as garage doors and electronic locks with the Danalock app. Install it in the electronic control loop and enjoy the added convenience of wireless access control.

Make sure your *Danalock app* firmware is up to date before continuing setup

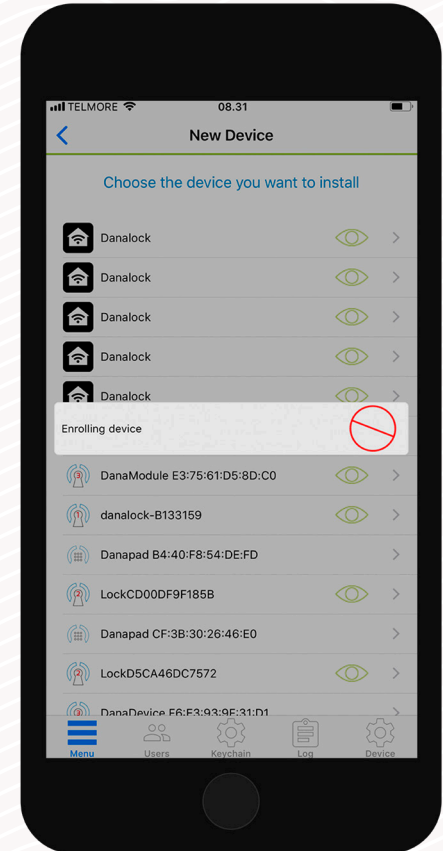
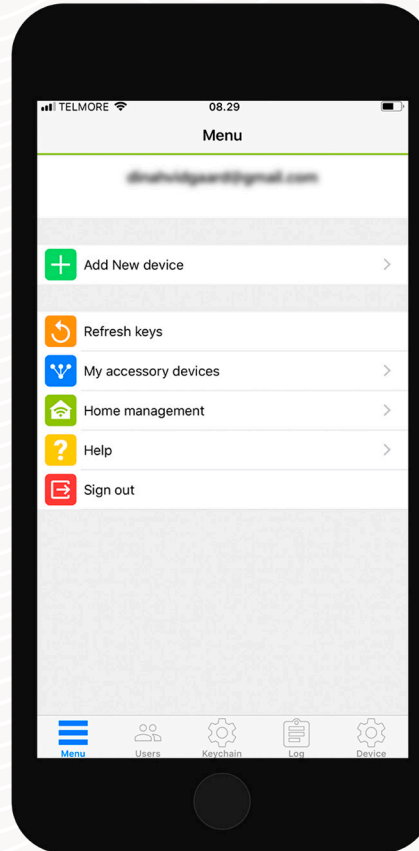




## Add new device

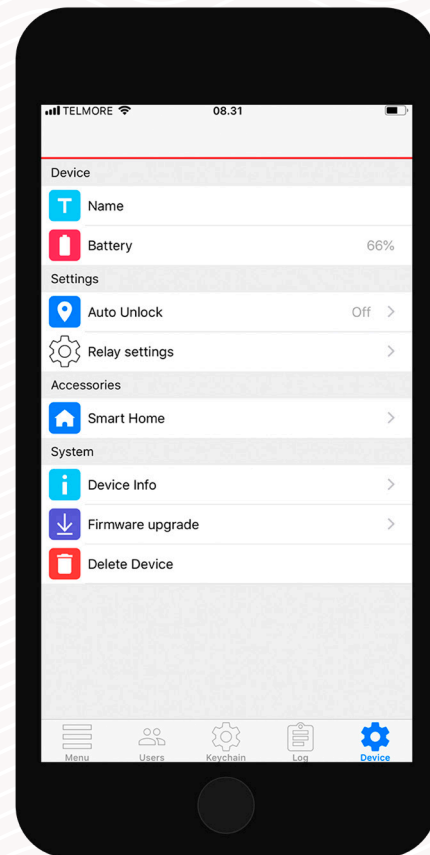
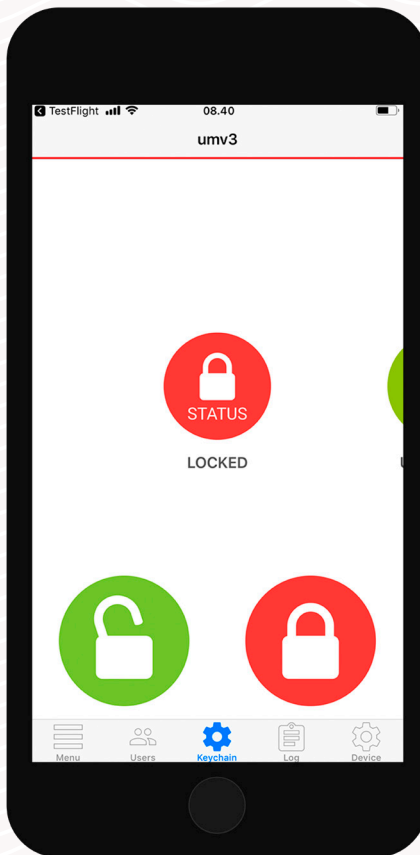
Before adding the Universal Module V3 to your Danalock app, it must be connected to a power source.

Open Danalock app. Press MENU > ADD NEW DEVICE. Locate the Universal Module V3 named DanaModule followed by its serial number, on the list of available devices. Now press the Universal Module V3 ID.



## Settings

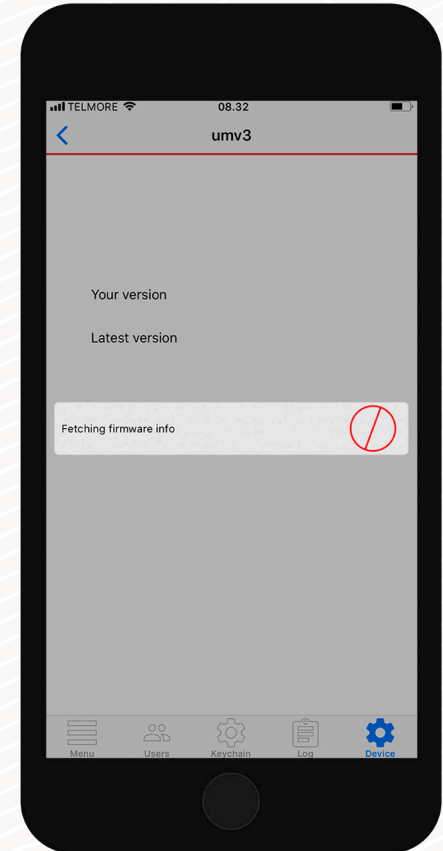
In the Danalock app keychain the Universal Module V3 is shown as a regular lock when added to your account. To change settings, navigate to the device in KEYCHAIN and press DEVICE to open *device settings*.



## Firmware update

Go to device settings, press FIRMWARE UPGRADE. The Danalock App checks the installed firmware. If there is a newer version available, you get the option to update.

Note: It is important that you keep your phone near the Universal Module V3 during the firmware upgrade process.

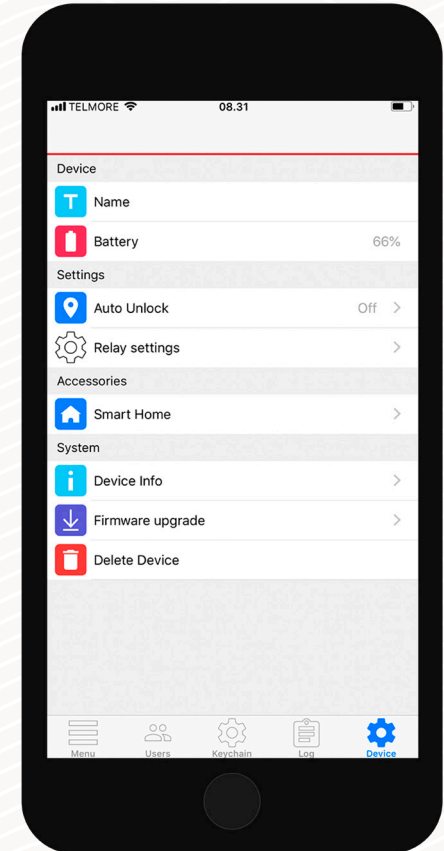


## Rename

Give your newly added device a descriptive name, making it easy to recognize in the Danalock app keychain.

To set or edit the device name you must go to device settings.

Navigate to the Universal Module V3 in the KEYCHAIN, press:  
DEVICE > NAME.



## Auto Unlock

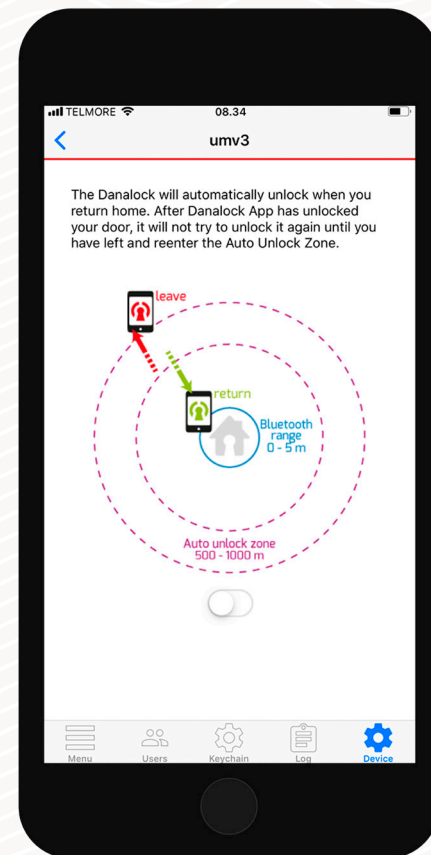
With the *Auto Unlock* feature the Universal Module V3 will detect your arrival and unlock the door when you get home.

The Auto Unlock feature uses GPS geofence to sense when you are getting home. When you enter the *Auto Unlock zone* (300-1000 m depending on setup), the Danalock app will start looking for your Universal Module V3 and unlock it when you get within Bluetooth® range. The app will not unlock again before you exit and re-enter the zone.

Feature setup vary between iOS and Android devices.

Read more on [Danalock.com](https://danalock.com) > FAQ

Circumstances beyond Danalock's influence such as phone model and OS setup, GPS, BLE, and environment can affect the functionality and behavior of the *Auto Unlock* feature and cause it to fail. It is recommended that *Auto Unlock* is disabled while you are inside the Auto Unlock zone and enabled when you leave.



## Relays

The Universal Module V3 has two relays to be used when setting up the control loop, for example in cases where you need to operate two electronic devices. You can also setup the Universal Module V3 with the use of one relay. The relays can be set up collectively only.

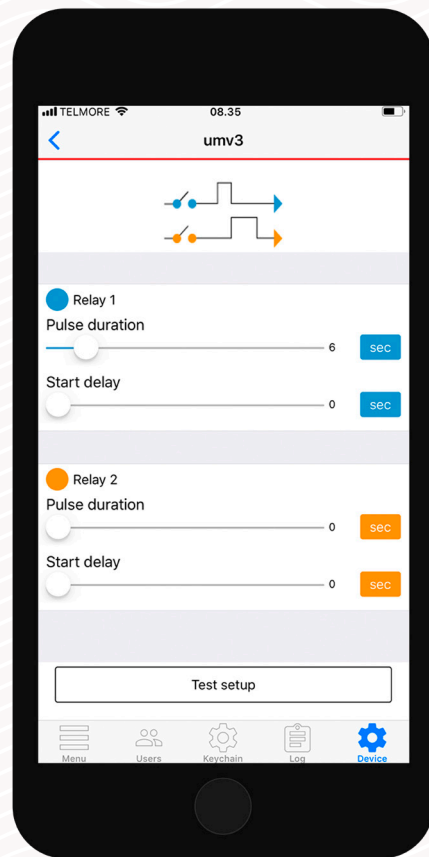
When inside Universal Module V3 device settings press RELAY SETTINGS. The settings of Relay 1 and 2 is adjusted by a number slider.

In case you want to use *Power Output* (12-24V DC 1amp) you'll set it up in the app as Relay 1.

### Relays

## Pulse duration

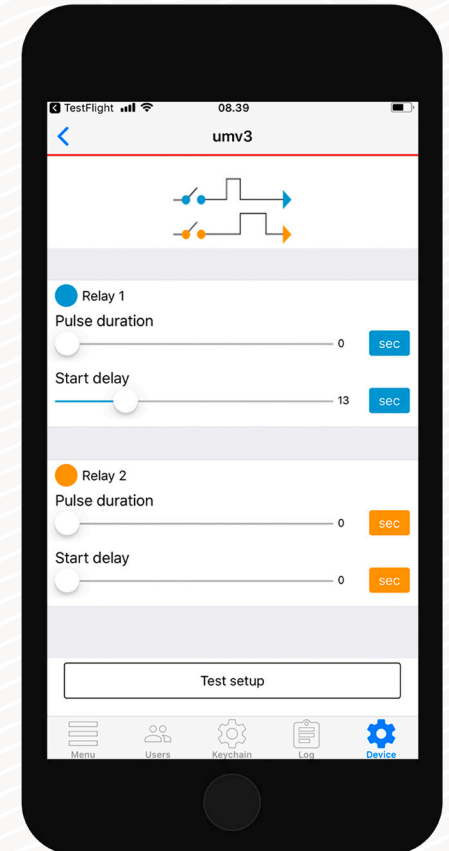
Set duration of the relay pulse in seconds, minutes or infinite. Setting pulse duration is used when Universal Module V3 triggers e.g. a garage door. In this case you cannot use the lock state in the Danalock keychain to tell you if the door is open or closed.



## Relays

### Start delay

Delay relay pulse start for seconds or minutes. Situations where you set start delay can be cases where you have two door strikes that must be triggered with a delay either for one or both relays.



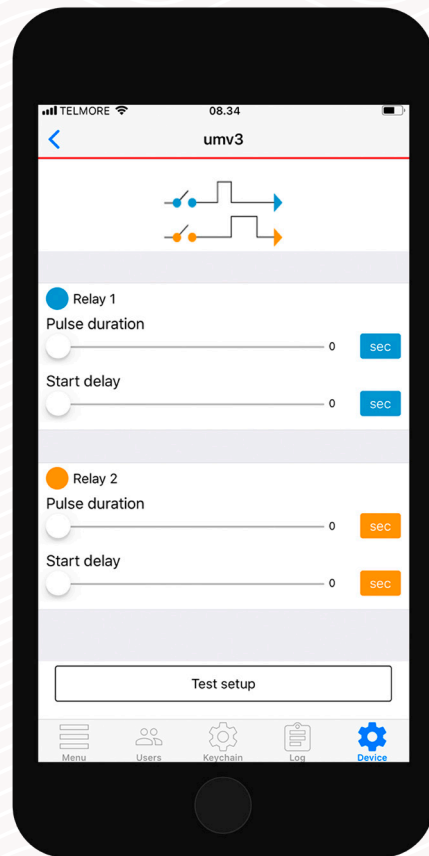


## Relays

### Time unit

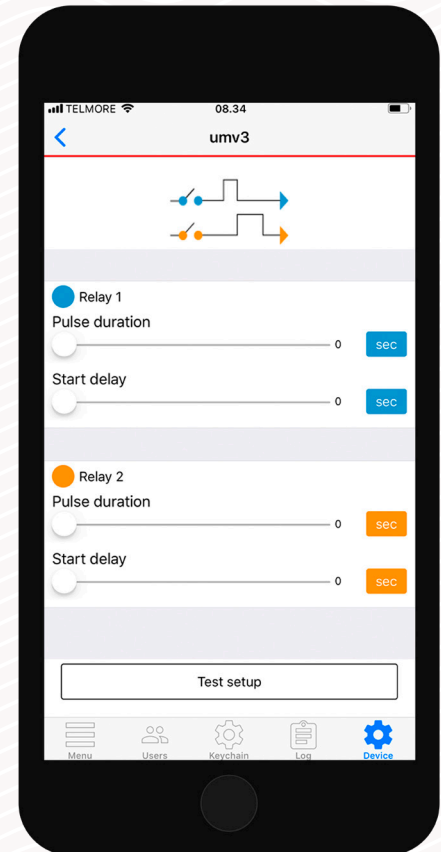
To the left of the relay number sliders you can alternate between seconds, minutes and infinite (pulse only) via press on the unit button. Setting the unit to infinite you can set up your control loop as a door switch for example keeping the door strike in an unlocked position.

When using the infinite pulse setting the Universal Module V3 draws power as long as it is in the on-state. This should be taken into consideration if set up with a battery power supply.



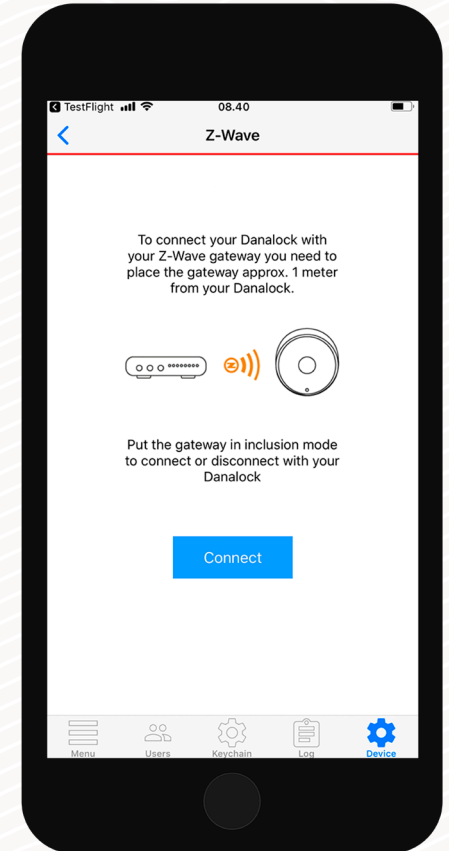
*Relays***Test setup**

You can test your setup by pressing the TEST SETUP button. If the setup isn't valid you will be alerted.



## Smart Home

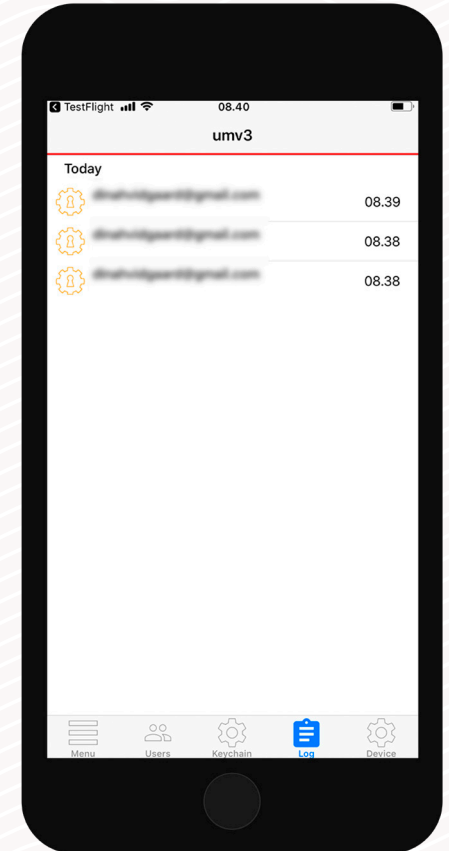
This feature is for Universal Module V3 Z-Wave models only. You can add the Universal Module V3 to your Z-Wave smart home setup. Go to DEVICE > SMART HOME > Z-WAVE. Follow the instructions on the screen.



## Log

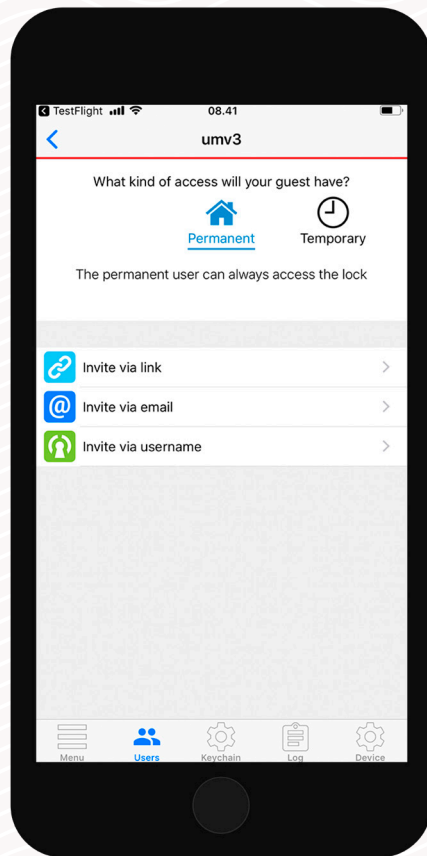
With the Universal Module V3 focused in the keychain, you can access logs from the bottom bar in the app. In the log you can monitor the usage of your Universal Module V3.

You can see a detailed list of who has accessed your lock. The icon on the left indicates what kind of activity was performed, date and time.



## Invite a guest

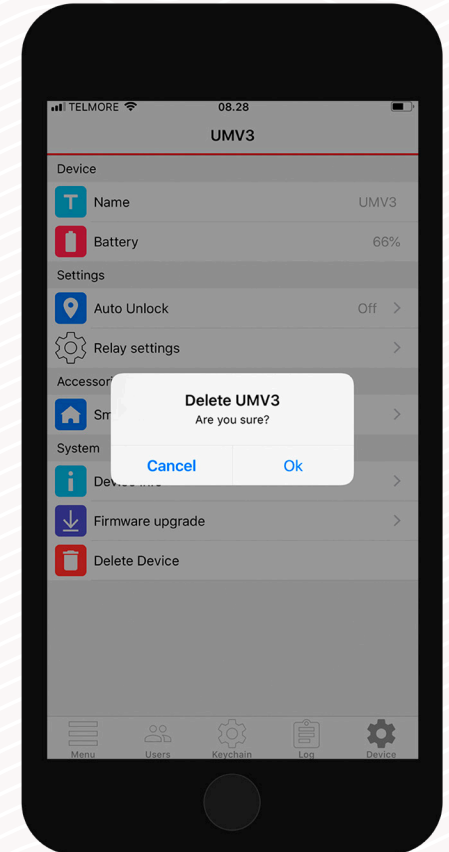
If you have more than one lock device in the keychain (Danalock V3 or Universal Module V3) navigate to the device you want to invite to, and press USERS. Press INVITE in the upper right corner to go to the invitation screen.



Read more about managing guests in the *basic Danalock app guide*.

## Delete

Navigate to the Universal Module V3 in the keychain. In the SETTINGS list of your Universal Module V3 press DELETE DEVICE. The Danalock App will remove the lock from your account.



## Reset settings

To reset the Universal module V3 you insert a small pin or paper clip into the hole on one of the sides of the device. Press ten times. When the reset request is confirmed the LED will blink red. Resetting deletes all settings and keys set on the Universal Module V3.



# My accessory devices

- Danapad V3



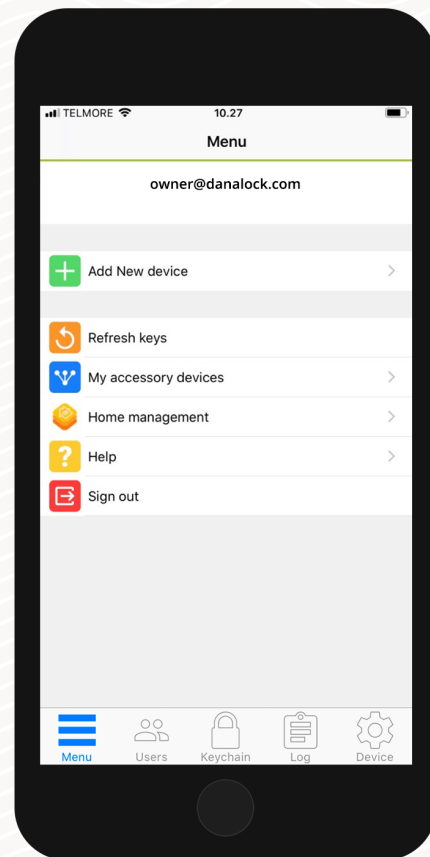
Visit our website for more information about  
Danalock products and product guides

[www.danalock.com](http://www.danalock.com)



## My accessory devices

The functionality of your Danalock V3 can be extended by installing accessory devices. You can find all your currently connected accessory devices by going to MENU > MY ACCESSORY DEVICES.



## Danapad V3

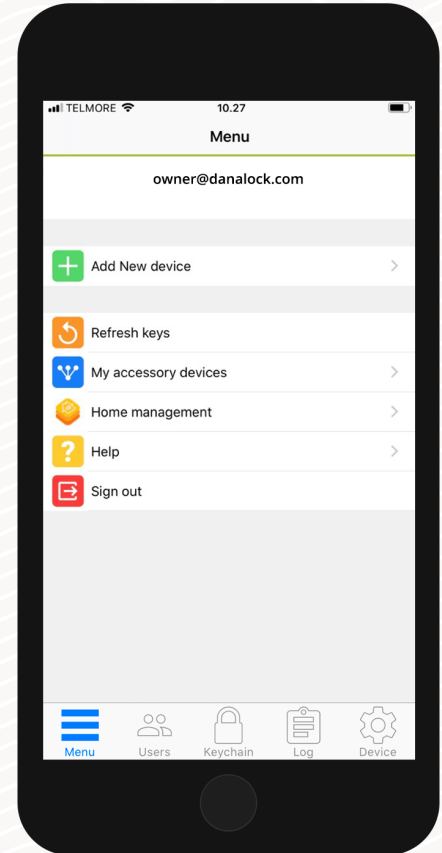
The Danapad V3 wireless keypad lets you operate the Danalock V3 with pin codes. When your Danalock V3 has been paired with a Danapad V3 it can be operated with pin codes as well as through the Danalock App.



Make sure your *Danalock app* and *Danalock V3* firmware are up to date before continuing setup

## Add to the Danalock app

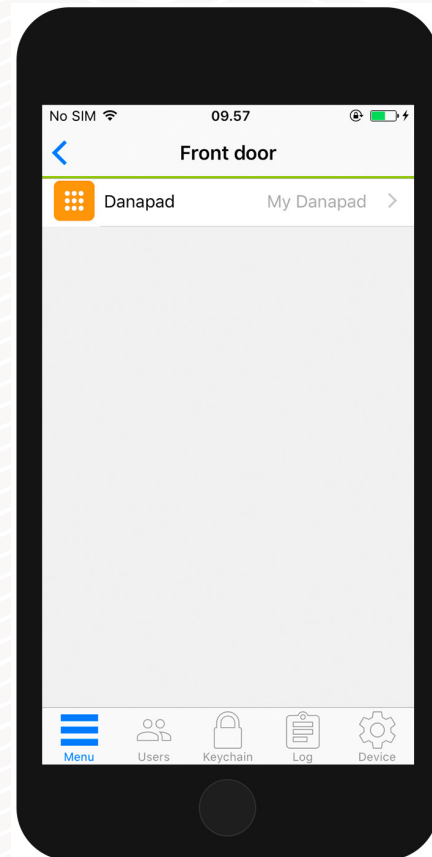
Make sure your Danalock V3 has the latest firmware installed. Add the Danapad V3 in the Danalock App. Go to MENU > ADD NEW DEVICE and select your Danapad V3.



## Settings

To change Danapad V3 settings you must be within Bluetooth range of the device. Go to: MENU > MY ACCESSORY DEVICES. Choose the Danapad V3 from the list to view device information.

To change the settings of your Danapad V3 you need to be within Bluetooth range of Danapad V3 and Danalock V3.

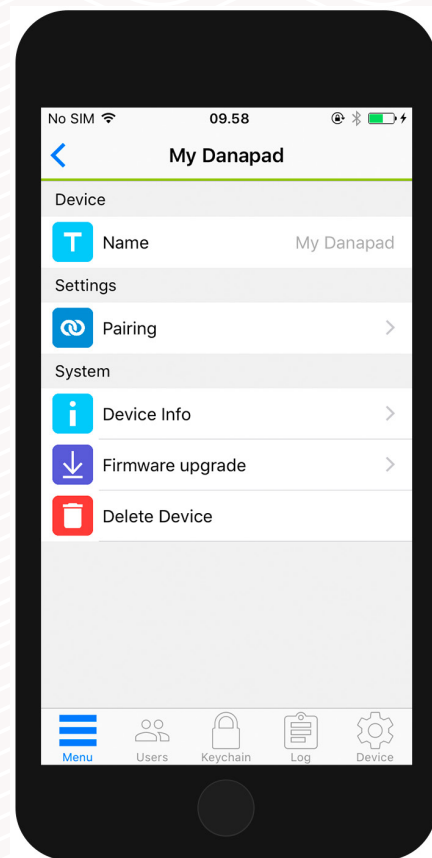


### Settings

## Firmware update

Before updating the firmware, make sure that the phone is at a sufficient power level. Start updating the firmware of your Danapad V3 by pressing FIRMWARE in the SETTINGS list of your Danapad V3. The App checks installed firmware and updates it if there is a newer one available.

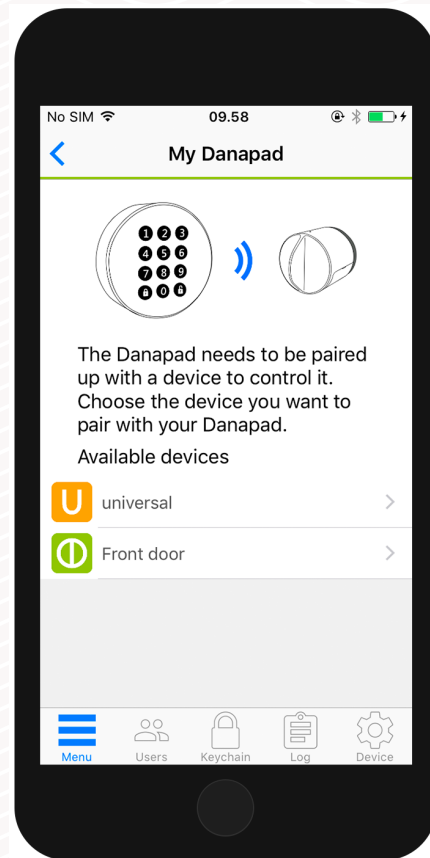
It is important that you keep your phone near the Danapad V3 during the firmware update process.



### Settings

## Pair device

Select PAIRING in the SETTINGS list. You will be presented with a list of all your Danalock devices that are supported and in range. Select the device you want to pair with your Danapad V3 and wait for the app to complete the pairing.



## Settings

### Create a pin code

In the Danapad V3 settings select PIN CODES. Create a new pin code by pressing the ADD button.

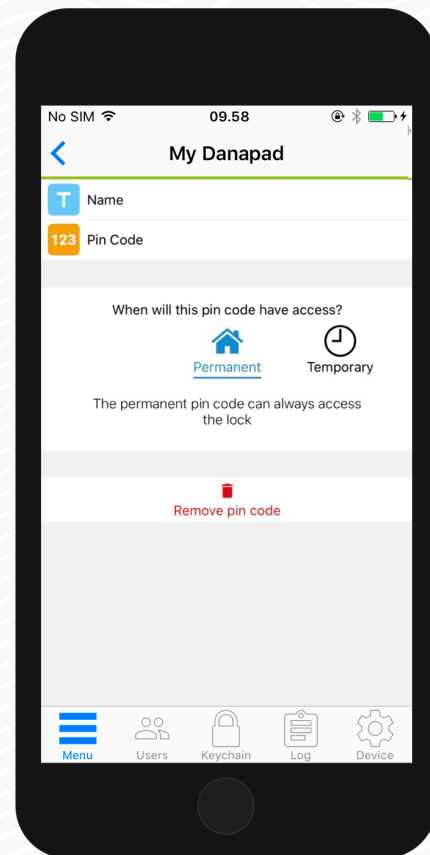
Enter a pin code combination between 4 –10 digits and select if the pin code should be permanent or temporary.

#### Temporary pin codes

Temporary pin codes are active in a single time interval. With this access type, you define the interval in which you want the pin codes to work.

#### Permanent pin codes

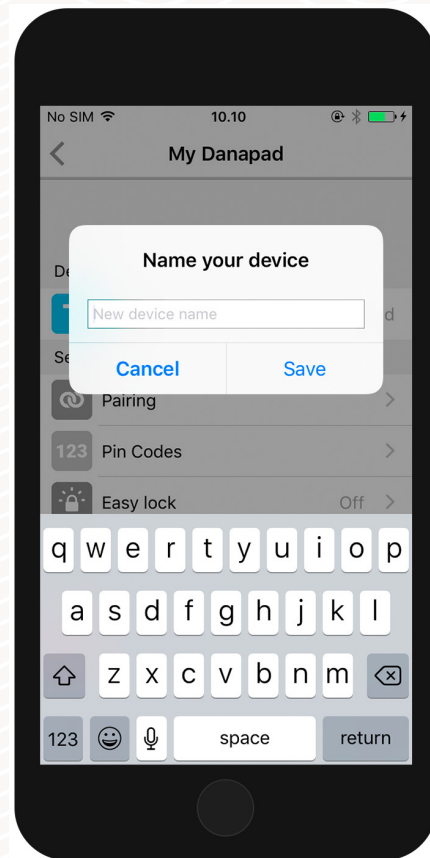
Permanent pin codes are always active.



## Settings

### Rename

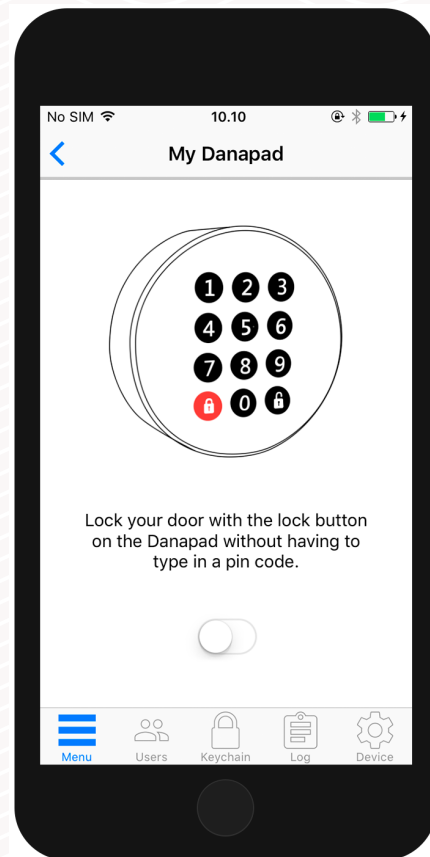
You can change the name of your Danapad V3 by pressing NAME in the SETTINGS list of your Danapad V3 and entering the desired name.





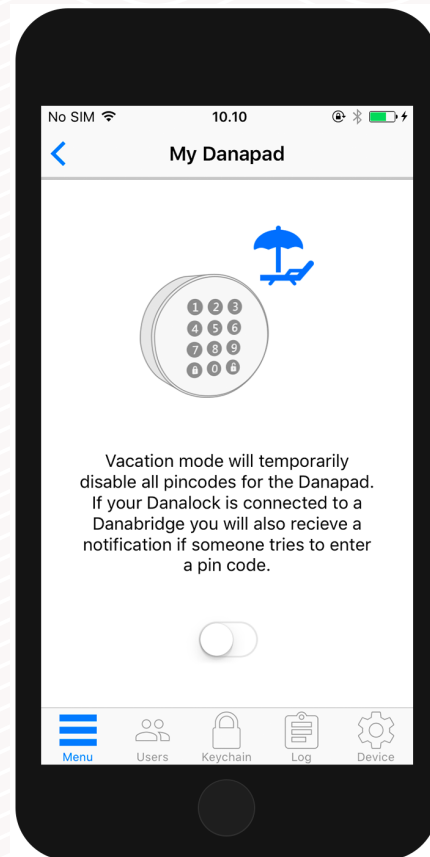
*Settings***Easy lock**

The Danapad V3 locks with only a single push of the lock button. Press EASY LOCK in the SETTINGS list of your Danapad V3 and check the toggle switch on.

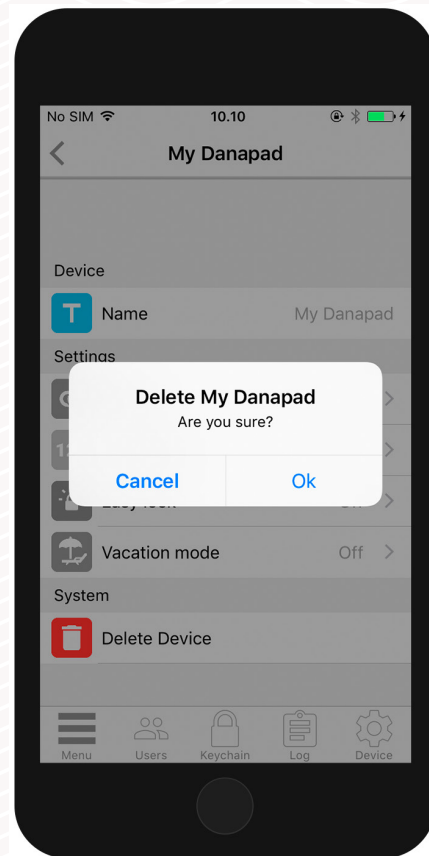


## Vacation mode

You can disable access via the Danapad V3 temporarily if you are leaving home for a while. Vacation mode will disable all pin codes for the Danapad V3 while it is turned on. Press VACATION MODE in the SETTINGS list of your Danapad V3 and check the toggle switch on.



To remove the Danapad V3 start by unpairing it from your Danalock device. In the Danapad V3 SETTINGS list press PAIRING > UNPAIR DEVICE. When the Danapad V3 has been unpaired press DELETE in the SETTINGS list.





17/01/2020

# My accessory devices

- Danabridge V3



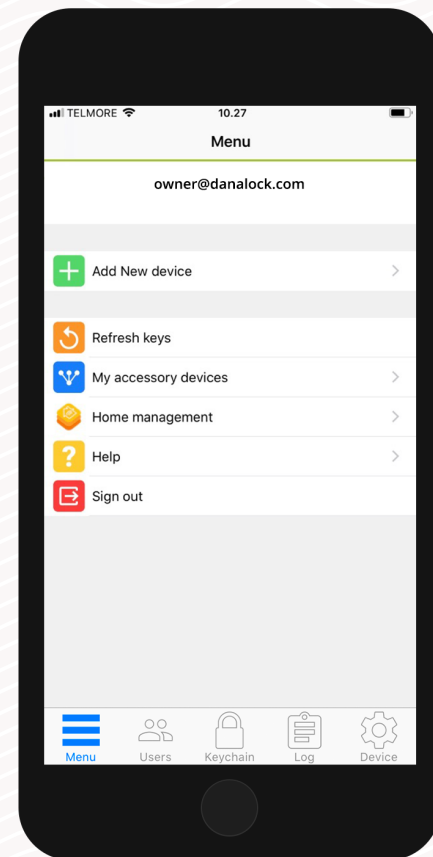
Visit our website for more information about  
Danalock products and product guides

[www.danalock.com](http://www.danalock.com)

## My accessory devices

The functionality of your Danalock V3 can be extended by installing accessory devices. You can find all your currently connected accessory devices by going to MENU > MY ACCESSORY DEVICES.

You can add new accessory devices in the same way as other Danalock devices by going to MENU > ADD DEVICE.



## Danabridge V3

Connect your Danalock V3 smart lock to the Danabridge V3 and control and operate your Danalock from anywhere. Enjoy the added convenience of letting family members, friends and home service providers in – even when you're not at home.

Make sure your *Danalock app* and *Danalock V3* firmware are up to date before continuing setup

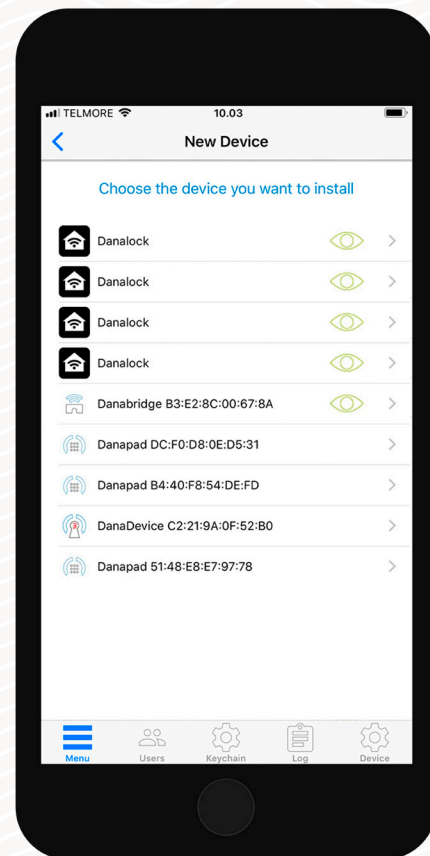


## Add to the Danalock app

Plug the Danabridge V3 into a power outlet. The Danabridge V3 LED light shows a white color followed by a yellow blinking (more about LED, page 13). Open Danalock App.

Press MENU > ADD NEW DEVICE. Add the Danabridge V3 by locating it on the list. Now press the Danabridge ID.

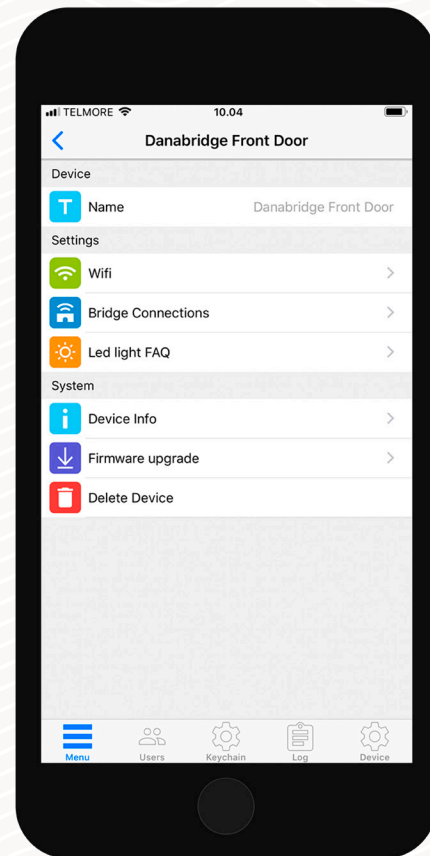
The Danabridge V3 must be placed within Bluetooth range of the Danalock V3 (max 5-10 meters)



## Settings

To change Danabridge V3 settings you must be within Bluetooth range of the device. To pair the enrolled Danabridge V3 or change its settings you go to: MENU > MY ACCESSORY DEVICES. Choose the Danabridge V3 from the list to view device information.

To change the settings of your Danabridge V3 you need to be within Bluetooth range of Danabridge V3 and Danalock V3.





### Settings

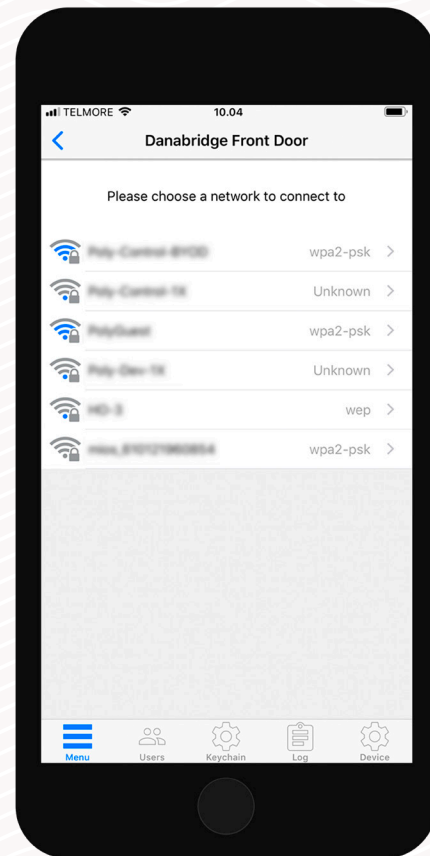
## Connect to Wi-Fi

The Danabridge V3 must be connected to your Wi-Fi before you can access your Danalock V3 remotely.

To connect the Danabridge V3 to your Wi-Fi, press the WI-FI option. Choose a Wi-Fi connection and fill out the required fields.

The LED will light up in several colors ending up as green, indicating the Danabridge V3 is online.

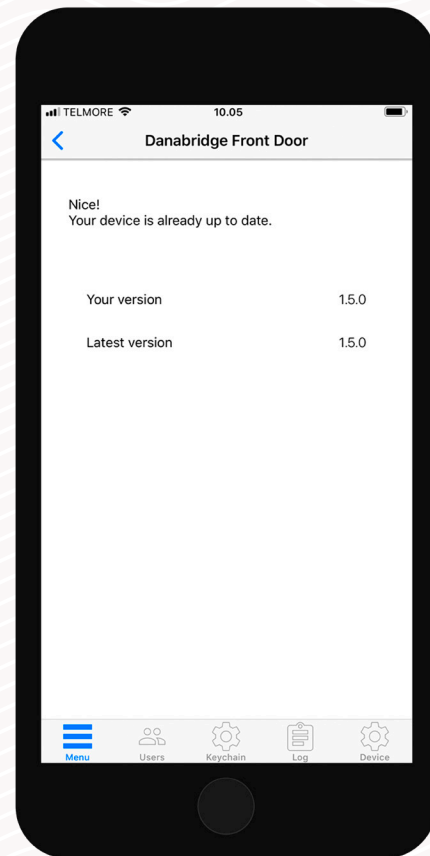
If the color is red the connection failed. Try again and make sure you have entered the proper password



*Settings***Firmware update**

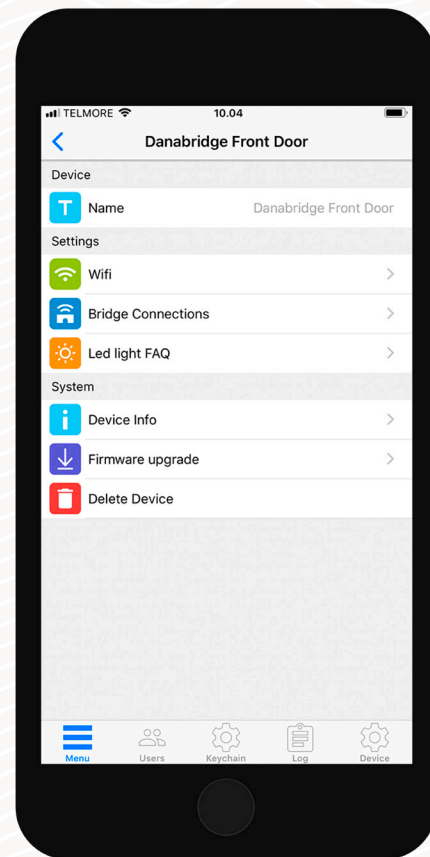
Danalock will occasionally release new firmware updates for the Danabridge V3. You can check if your Danabridge V3 has the latest version installed by pressing FIRMWARE UPGRADE.

It is important you keep your phone near the Danabridge V3 during the firmware update process.



*Settings***Rename**

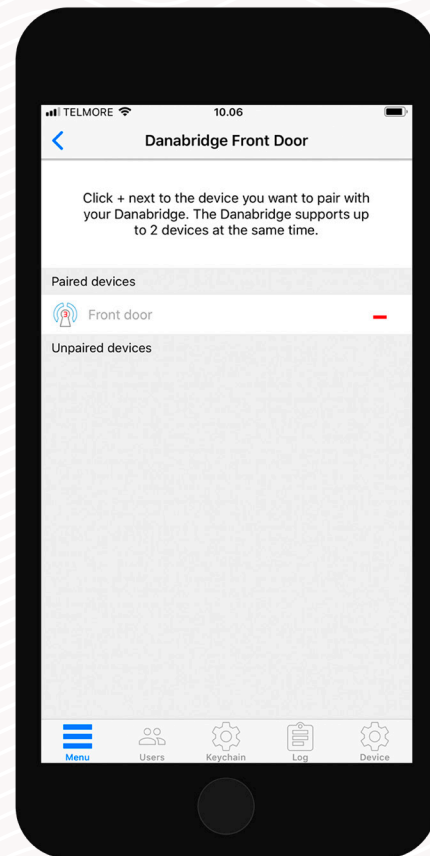
If you have several devices added to your account, naming a device makes it easier to locate the correct one. You can also use the serial number of the device to identify it.



### Settings

## Pair device

You can pair the Danabridge V3 with up to two devices. When inside device settings for Danabridge V3 press BRIDGE CONNECTIONS to pair or unpair with another device. You'll see a list of paired devices and unpaired devices. Locate the desired Danalock V3 device and press it to pair. If pairing is successful, the Danalock V3 will be present in the *paired devices* section.



### Settings

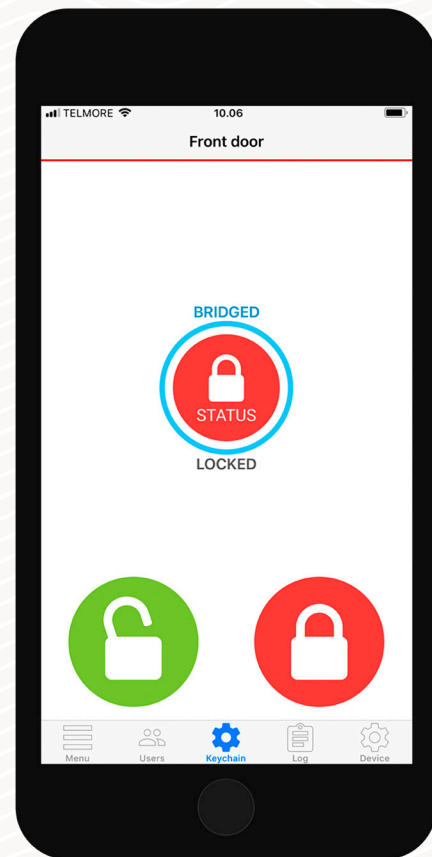
## Keychain visibility and operation

When you have paired the Danabridge V3 with a Danalock V3, the bridge connection is illustrated in the keychain as a blue circle around the lock icon.

To prevent *pocket unlocking*, the app will ask you to verify lock operation when operating the lock remotely.





*Lock status is showing as Unknown in the Danalock app when you are out of Bluetooth reach of the Danalock V3.*

To check the status of the lock: Swipe to the bridged lock in the keychain (Danalock app) and press the lock status icon.



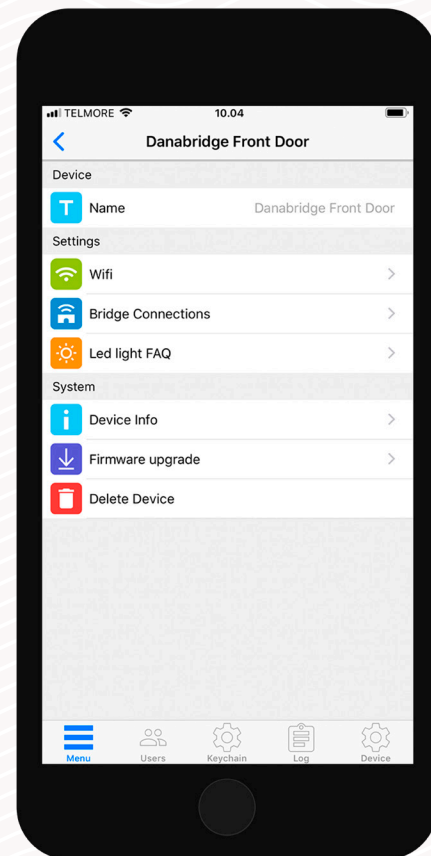
## LED signals

The Danabridge V3 has an LED light embedded. The LED signals will show you the status of your Danabridge V3.

LED signal	LED color	Status indication
Long white blink		Power on
Constant red light		Danabridge offline
Yellow blinking		Danabridge is not configured
Red blinking		Danabridge no server connection
Green blinking		Communication in progress
Constant blue light		Configuring Danabridge
Constant purple light		Firmware is being updated
Constant green light		Danabridge online

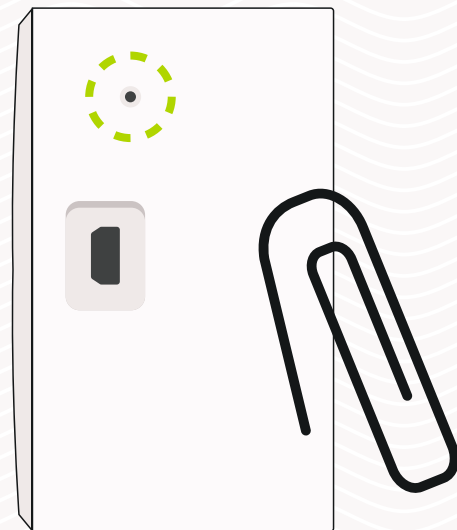
## Delete

To delete the device from your account start by unpairing it from your Danalock device. In the accessory device settings list press PAIRING > UNPAIR DEVICE. When the accessory device has been unpaired press DELETE DEVICE.



## Reset settings

To reset the Danabridge V3 settings you insert a small pin or paper clip into the hole on the side of the Danabridge V3 and press ten times. When the reset request is confirmed the LED will blink red.





Visit our website for more  
information about Danalock  
products and product guides

[www.danalock.com](http://www.danalock.com)